



# MORECAMBE



FLOTATION ENERGY

## Morecambe Offshore Windfarm: Generation Assets Environmental Statement

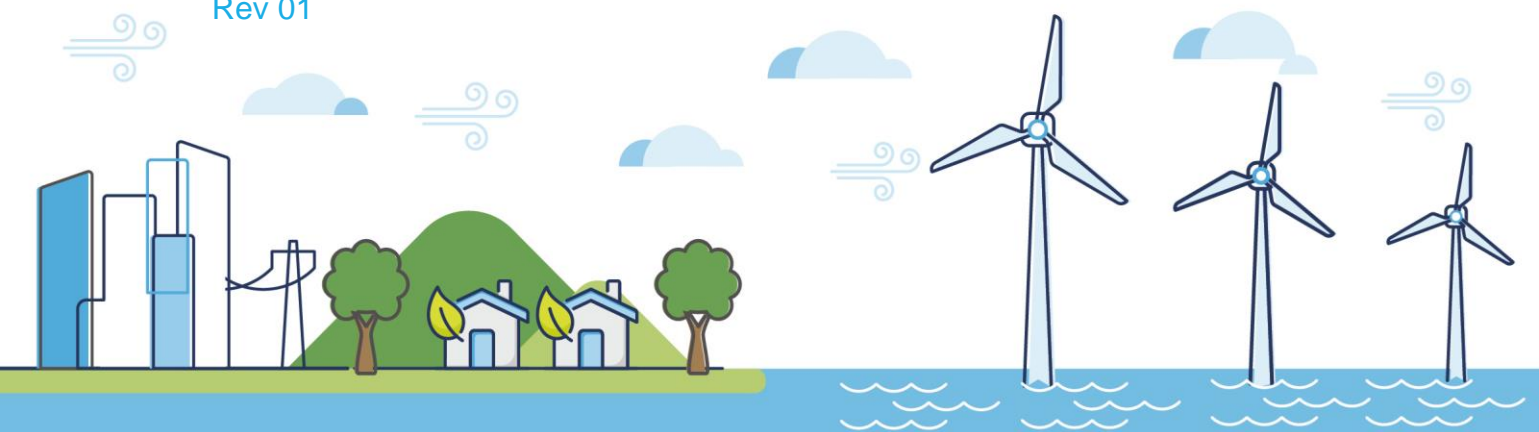
### Volume 5

### Chapter 23 Summary: Generation and Transmission Assets Assessment Figures

PINS Document Reference: 5.3.23

APFP Regulation: 5(2)(a)

Rev 01

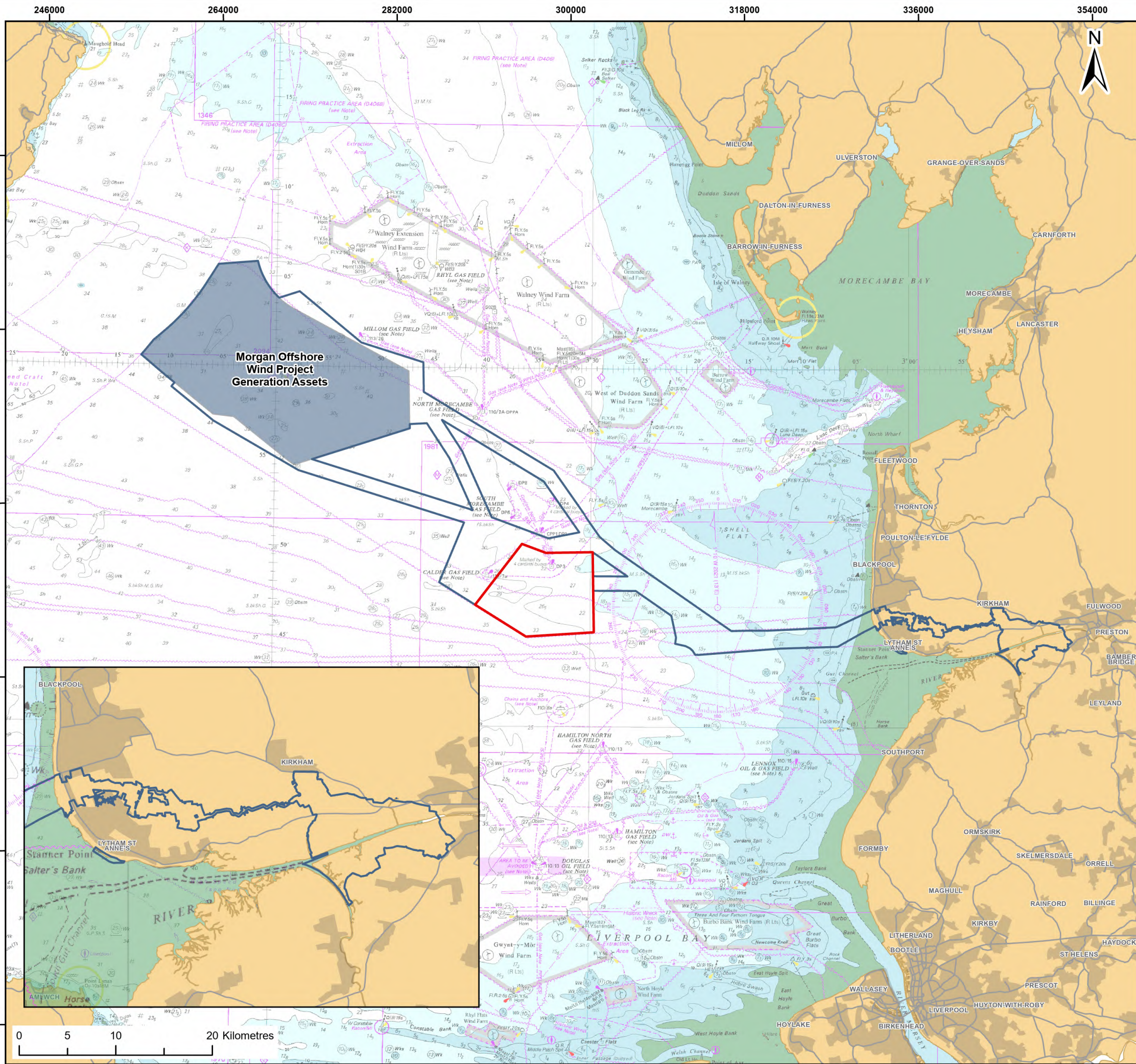


## Document History

<b>Doc No</b>	MOR001-FLO-CON-ENV-FIG-1230	<b>Rev</b>	01
<b>Alt Doc No</b>	PC1165-RHD-ES-XX-DG-Z-0023		
<b>Document Status</b>	Approved for Use	<b>Doc Date</b>	May 2024
<b>PINS Doc Ref</b>	5.3.23	<b>APFP Ref</b>	5(2)(a)

<b>Rev</b>	<b>Date</b>	<b>Doc Status</b>	<b>Originator</b>	<b>Reviewer</b>	<b>Approver</b>	<b>Modifications</b>
01	May 2024	Approved for Use	Royal HaskoningDHV	Morecambe Offshore Windfarm Ltd	Morecambe Offshore Windfarm Ltd	n/a





**Legend:**

- Morecambe Offshore Windfarm Generation Assets
- Morgan and Morecambe Offshore Wind Farms: Transmission Assets

**Windfarm status**

- In Planning

© TCE, 2024; © Haskoning DHV UK Ltd, 2024; Contains OS data © Crown copyright and database right, 2024; © British Crown and OceanWise, 2024. All rights reserved. License No. EMS-EK001-FN800-004780. Not to be used for Navigation; Map data © OpenStreetMap contributors, Microsoft, Facebook, Inc. and its affiliates, Esri Community Maps contributors, Map layer by Esri

**Report:**  
Morecambe Offshore Windfarm: Generation Assets  
Environmental Statement

**Title:**  
Morecambe Offshore Windfarm Generation  
Assets and Morgan and Morecambe Offshore Wind Farms:  
Transmission Assets

**Figure:** 23.1      **Drawing No:** PC1165-RHD-ES-OF-DR-Z-0107

Revision:	Date:	Drawn:	Checked:	Size:	Scale:
P01	07/12/2023	JH	AS	A3	1:400,000
P02	02/05/2024	SB	AS	A3	1:400,000

Co-ordinate system: WGS 1984 UTM Zone 30N

